



Rutgers University, Piscataway, NJ



Estimating and Project Management

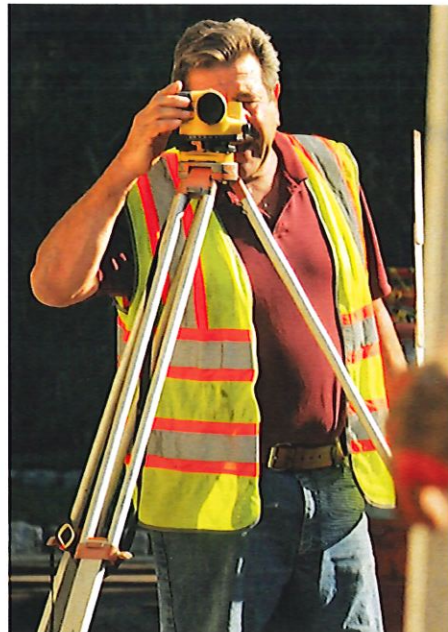
Our Estimating & Project Management Team has over 90 years of experience in the construction industry.

We have equipped their network of computers with HCSS Software, the leader in Heavy/Highway/Utility Estimating and Job Control Software.

Our take-off department is entirely computer based, complete with digitizer tablet, insight software and microsoft project.

This allows us to deliver accurate quantity take-offs, complete with graphics and reports, as back-up and support for our proposals.

*"We stand behind our work.
If we can't do a job right,
we don't want to do it at all."
~ John Rothberg*



L.N. ROTHBERG & SON INC.

Since 1948 "We Move The Earth!"

Lou Rothberg founded L. N. Rothberg & Son in 1948 with the best positive attitude.

*"Good people do not work for you,
they work with you."*

~ Lou Rothberg

When working with L. N. Rothberg & Son you get one of the most experienced partners in the industry and the comfort and security of knowing that the quality of our work is guaranteed with something no one else can offer, our word and our reputation.

We take great pride in the confidence our customers have in allowing us to do their work.

*"Be loyal to your employees
and be loyal to your customers."*

~ John Rothberg

**# 1 In Quality & Customer Service
More Than 65 Years!**

Louis N. Rothberg & Son, Inc.
550 Cedar Avenue, PO Box 550
Middlesex, N.J. 08846

Office: 732-356-9505 • Fax: 732-356-0974

email: info@lnrothberg.com

website: www.lnrothberg.com

President's Message



Evolution of Business in the New Millennium

Our company was founded in 1948 by my father, Louis N. Rothberg. Since then there have been many changes in the construction industry. New technology has improved the equipment we use, the materials we install, and the means and methods required to deliver a project on-time and on budget.

However, while the fast-track time requirements of a project from design to completion are far different from the way things were done in the 50's and 60's, there are two principles that have remained unchanged: Be loyal to your customers and be loyal to your employees. These are the key items to any successful business.

Implementing this philosophy, along with paying close attention to planning and detail, we are able to deliver a completed project with the same quality and pride we have maintained since the beginning.

We look forward to having the opportunity to perform one of the many services we offer when needed at your facility.

John Rothberg



Our Clientele

Commercial
Industrial
Institutional
Residential Development

Our Services

Milling • Paving • Road Construction
Complete Sitework
Excavating & Grading
Mobile Crushing
Storm Drainage • Water Lines
Sanitary Sewer Lines • Site Concrete
Pavement Repair & Crack Filling
Catch Basin & Drainage Repair
Asphalt Pathways • Athletic Courts
Retaining Walls

