

# Advanced Pavement Group

ASPHALT | CONCRETE | DRAINAGE | MAINTENANCE



**The Northeast and Mid-Atlantic's Premier Provider of Pavement Installation and Maintenance Solutions.**



# COMPANY OVERVIEW



*We believe that who we are is just as important as what we do.*

***Our Vision:*** *Simply to be the best, by executing as an Academy Class Organization, making us the logical choice in the Pavement Installation and Maintenance Market.*

## **OUR ACADEMY ORGANIZATION IS KNOWN FOR:**

Delivering superior business performance.

Being a trusted partner, delivering excellent value to our clients.

Where the best people want to work and who are known for the value they deliver.

Leading the industry in growth.

**ADVANCED THINKING. ADVANCED TECHNOLOGY. ADVANCED COMMITMENT. ADVANCED PERFORMANCE.**





# SERVICES

## Looking for the right team for the job?

We want to provide you with an exceptional and consistent level of service, unsurpassed quality, and a tireless commitment to your budget and timeline. To increase that value for our partners, Advanced Pavement Group offers a broad array of services and products.



### Asphalt Milling & Paving



### Asphalt Repair & Maintenance

- Pothole Repair
- Infrared Asphalt Repair
- Crack Sealing
- Sealcoating
- Line Striping



### Excavation & Sitework

- Drainage Installation
- Soil Stabilization
- Stone Installation
- Trenching for Underground Utilities
- Grading



### Sweeping & Porter Services

- Parking Lot, Street, and Construction Sweeping
- Floor Scrubbing
- Parking Garage Sweeping
- Day Porter Services
- Debris Removal
- Pressure Washing

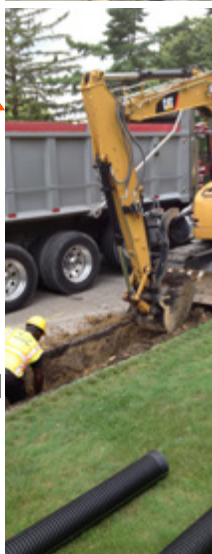
### Concrete Masonry & Hardscaping

- Sidewalks, Curbing, and Aprons
- Concrete Sealing
- Concrete Poly Raising



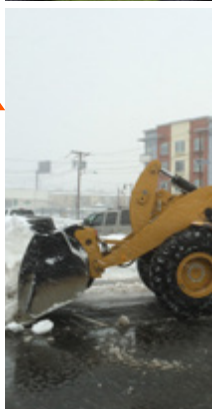
### Drainage

- Inlets, Trench Drains, and Catch Basins
- Detention and Retention Centers
- Down Spouts, Leaders, and Pipe Work
- Adjustments, Cleaning, and Jetting
- Storm Water Management
- Camera Inspections



### Snow & Ice Management

- Snow Plowing
- Snow Relocation
- Liquid Anti-Icing
- Granular De-Icing
- Liquid De-Icing
- Municipal Dump Truck Plowing





# COMMUNITY

Working with Home Owner Associations, Apartment Buildings, and Condominiums, we are able to increase resident safety, provide maintenance solutions for hard surfaces, and add value to the community.

Through thorough site assessments our partner communities can gain from short and long-term budgeting with prioritized maintenance plans. Providing maintenance solutions that extend the life of hard surfaces such as parking lots, roadways, driveways, and sidewalks allows for strategically planned construction and reconstruction projects for the future.



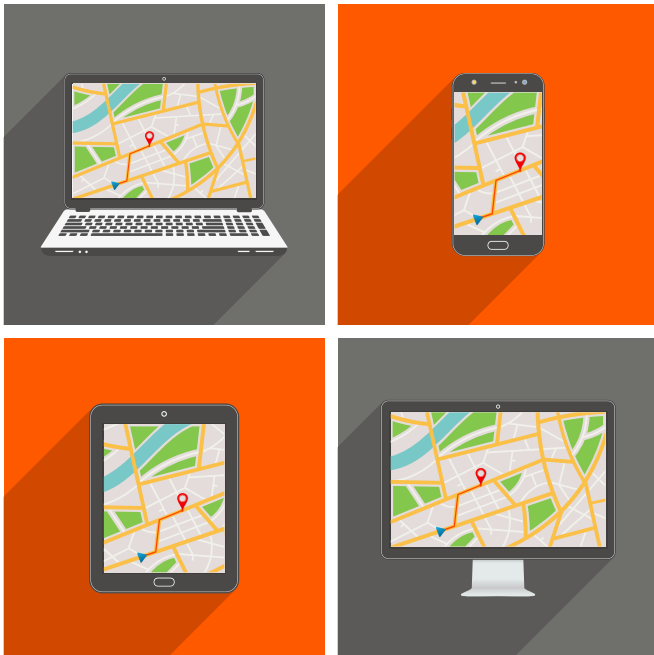
## ***Advanced Pavement Group will:***

- Make phasing convenient for tenants.
  - Transport residents to vehicles.
- Work consciously with the needs of residents in mind.



# CAPABILITIES

Advanced Pavement Group is uniquely positioned to provide self-performed, consistent and cost-effective solutions for large portfolios throughout the Northeast & Mid-Atlantic regions of the United States.



Our offices are local to the regions we serve. This means our crews have access to the equipment and resources of a large corporation but possess the local knowledge necessary to apply service procedures and produce results meeting the needs of the customer.



As a larger organization, Advanced Pavement Group can take on a higher volume of mid to large scale projects. The ability to operate several new construction and reconstruction projects at the same time without impacting maintenance and repair crews, allows our customers the benefit of scheduling and phasing options no matter the size of their project.



Add in the power of the most up-to-date technology, access to data in real time, and some of the most knowledgeable leaders in the industry, and Advanced Pavement Group emerges as the logical choice for managing your exterior hard surfaces.



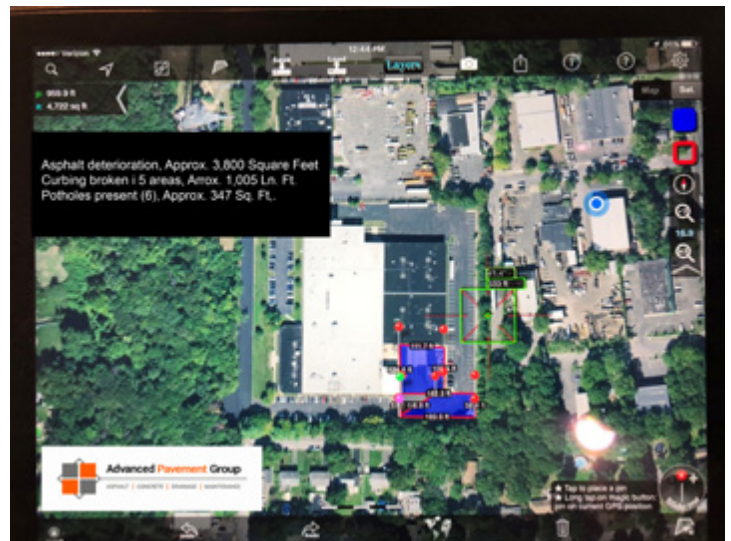


# PROPERTY ASSESSMENT & MAINTENANCE PLANS

A systematic approach to maintaining your hard surfaces is an investment in protecting your assets.

A comprehensive overview of the existing conditions of the hard surfaces on your property will provide you with the tools to:

- Take action on immediate maintenance items.
- Prioritize and budget for future needs.
- Gain insight into the life expectancy of your assets.
- Save money by being able to be proactive rather than reactive.
- Have complete data on all the properties in your portfolio.





# NEW PARKING LOT? NEW SIDEWALKS? MAINTENANCE PLAN?

If you have done any installation of a hard surface on your property or are planning to, a maintenance plan could be the most important conversation you have with your contractor.

A newly paved asphalt surface should be sealcoated within a year of installation. Having a 1, 3, and 5 year crack seal, sealcoat, and striping plan will add years to the quality and strength of your investment. Factoring repairs, such as patching or infrared restoration and routine maintenance into the budget of the project at the onset will protect the surface and save you money.

Concrete sealing and polyurethane concrete raising are extremely effective in sustaining pristine sidewalks throughout your property.



***A plan to maintain is a smart investment.***



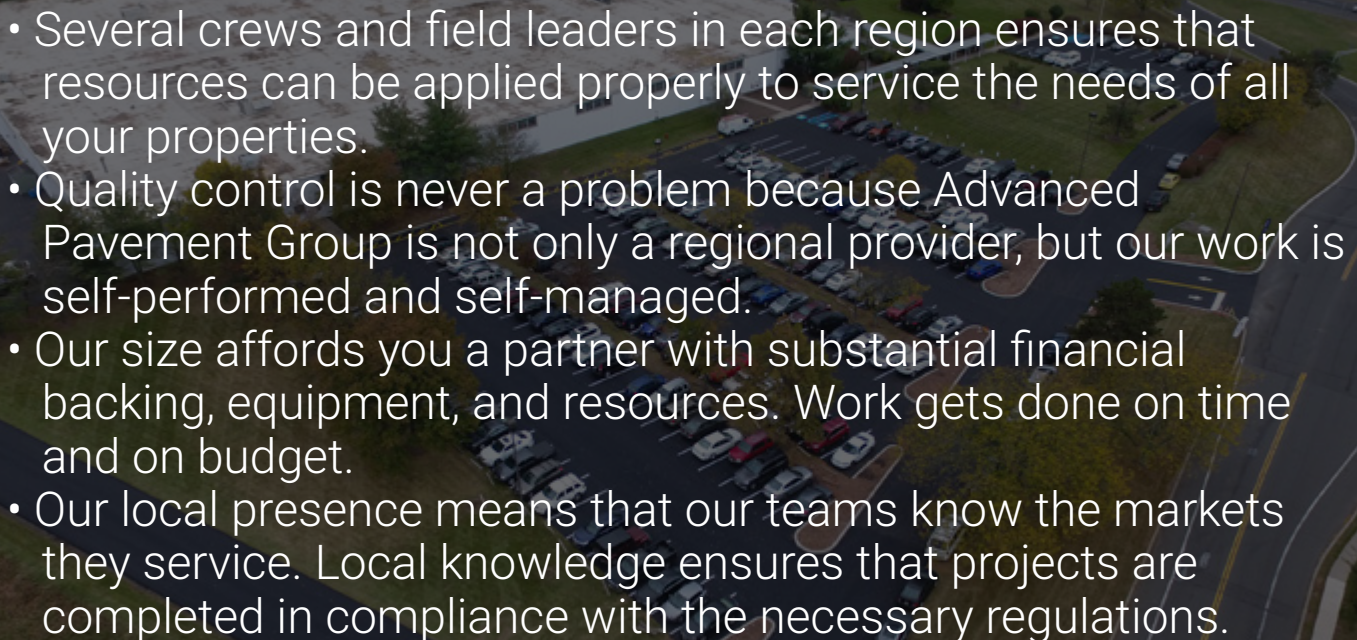


# SCALABILITY & PERFORMANCE

## *The right tools for the job?* ▼

Advanced means growing and improving to better service our partners.

Have a high volume and concentration of properties throughout the region? **No problem.** There are several advantages to partnering with Advanced Pavement Group.

- 
- Several crews and field leaders in each region ensures that resources can be applied properly to service the needs of all your properties.
  - Quality control is never a problem because Advanced Pavement Group is not only a regional provider, but our work is self-performed and self-managed.
  - Our size affords you a partner with substantial financial backing, equipment, and resources. Work gets done on time and on budget.
  - Our local presence means that our teams know the markets they service. Local knowledge ensures that projects are completed in compliance with the necessary regulations.



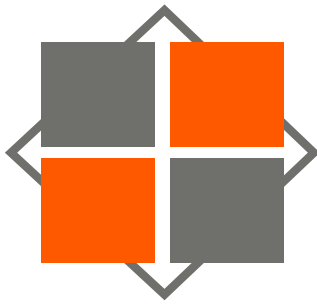


# WHAT TO EXPECT?

***What can you expect when you partner with Advanced Pavement Group? ▼***



- Software developed and implemented to ensure accountability.
- Complete assessment and detailed reporting on all properties within your portfolio.
- Knowledgeable and responsive personnel.
- The bandwidth and financial strength to handle every project, every time.
- Expansion and growth aimed at increasing the value we deliver.
- A commitment to remaining grounded in the communities we serve.



# Advanced **Pavement** Group

ASPHALT | CONCRETE | DRAINAGE | MAINTENANCE



[advancedpavementgroup.com](http://advancedpavementgroup.com)



[info@advancedpavementgroup.com](mailto:info@advancedpavementgroup.com)



1-833-PAVE-APG  
728-3274

ADVANCED THINKING. ADVANCED TECHNOLOGY. ADVANCED COMMITMENT. ADVANCED PERFORMANCE.